



# The Spirit of Charity Continues

**Juzar Ali M.D. FRCP FCCP**

**Interim CEO ,Medical Director, ILH /MCLNO  
Prof of Medicine ,Section of Pulmonary CC/LSU  
LSU Health Sciences Center  
Faculty , Tulane University Health Science Center  
Faculty : LSU School of Nursing  
Director OPH- Wetmore TB Clinic Region 1**

What's in a name? That which we call a rose  
By any other name would smell as sweet."

*Romeo and Juliet (II, ii, 1-2)*





LSUhealth  
INTERIM LSU PUBLIC HOSPITAL  
A LEVEL 1 TRAUMA CENTER

LSU  
INTERIM HOSPITAL

UNIVERSITY

LSU  
INTERIM HOSPITAL



# Big Charity



# Interim LSU Public Hospital

## **A.K.A.**

- **University Hospital**
- **Medical Center of Louisiana**
- **Charity Hospital**
- **San Carlos**
- **Hospital of Saint John or L'Hospital Paurves de la Charite**

# Old Charity Hospital

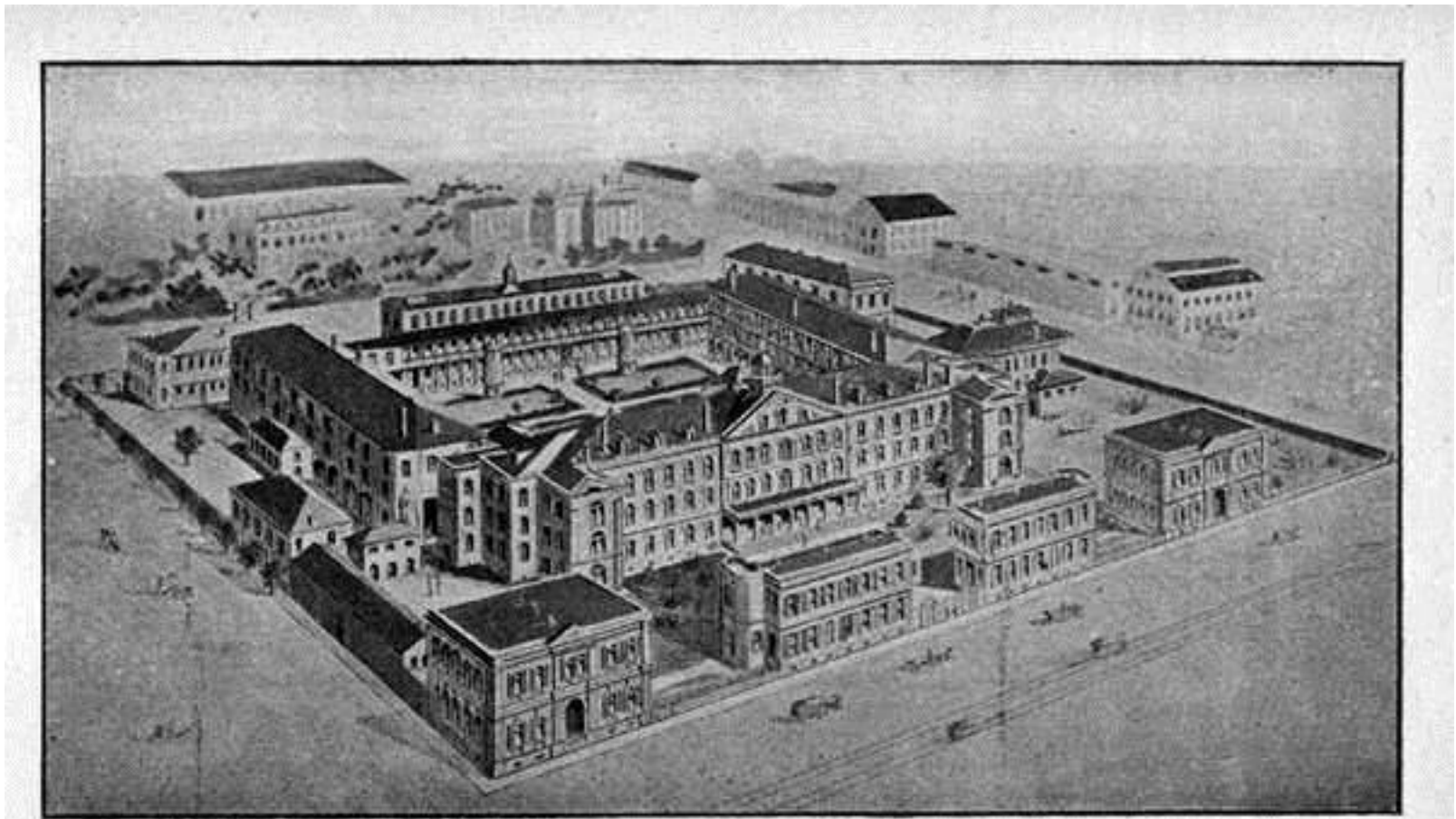


# Charity Hospital on Tulane Avenue





# Charity Hospital



THE CHARITY HOSPITAL.

# WHAT ARE WE?

- **PUBLIC**
- **Private/PRIVATE**
  
- **ACADEMIC**
- **TEACHING**
  
- **SERVICE**
- **COMMUNITY**

# *Expectations*

## Philosophy of Care

- Patients First; Patient Care first
- Teams – lead, follow, communicate
- Education: a must
- Compliance – Do the Right Thing
- Regulation --- necessary...
- Policies and importance thereof
- Quality measures/EQuIPS....

## ■ **NEW EVOLVING PROGRAMS** **examples**

Trauma Program , LERN network ,Stroke, AMI . TM, CMP,Weight mgm, GI Oncology, Thoracic onc, Pain mgm, Palliative Care, Crises Care , Critical care Areas, ED , Access to out pts svcs

## ■ **MULTI-DISC APPROACH**

## ■ **AMBULATORY SERVICES GROWTH**

## ■ **DISEASE /PT MANAGEMENT PGMS**

## ■ **HEALTH INFORMATICS**

## ■ **Community Networks**

**ALL this over the years despite  
continued and steady cuts**

# The Galaxy\*

\*Access to Care

E\*mployee Stress and morale

Hea\*lth Care Delivery

Pati\*ent satisfaction /Experience

Challenge\*s of "safety net hospitals : capacity/\$\$

Health Providers Incentives

Populat\*ion Based Health

Community B\*ased Collaborative Networking

Regula\*tory issues

Preventable Re\*admissions

Enh\*anced Standard of care

Pati\*ent Safety

Emer\*gency m\*gm / crises care

Med\*ical Home

Non\* nursing patient care

Patient \*Health Information literacy

Com\* munications and IT

\*ACGME & RRC

Patient Ac\*countability and communication

T\* raining and Educational mission

\* Hospital errors

O\*utcome Measures / National and \*International standards

Preventa\*ble Health Care complications

Sec\*urity concerns

N\*ursing PI pgms

Coordination\* and continuity of care

V\*alue Based care

# Post Sept 11, 2012

- **FMAP Reduction**
- **Expenditure authority cut**
- **Budget slashed**
- **Layoff planned**
- **Services to be cut**



# Dec 2012 In comes



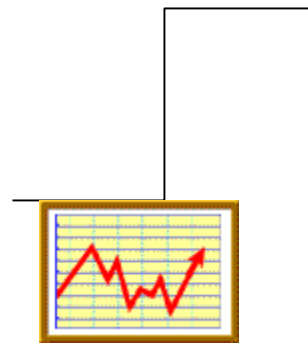
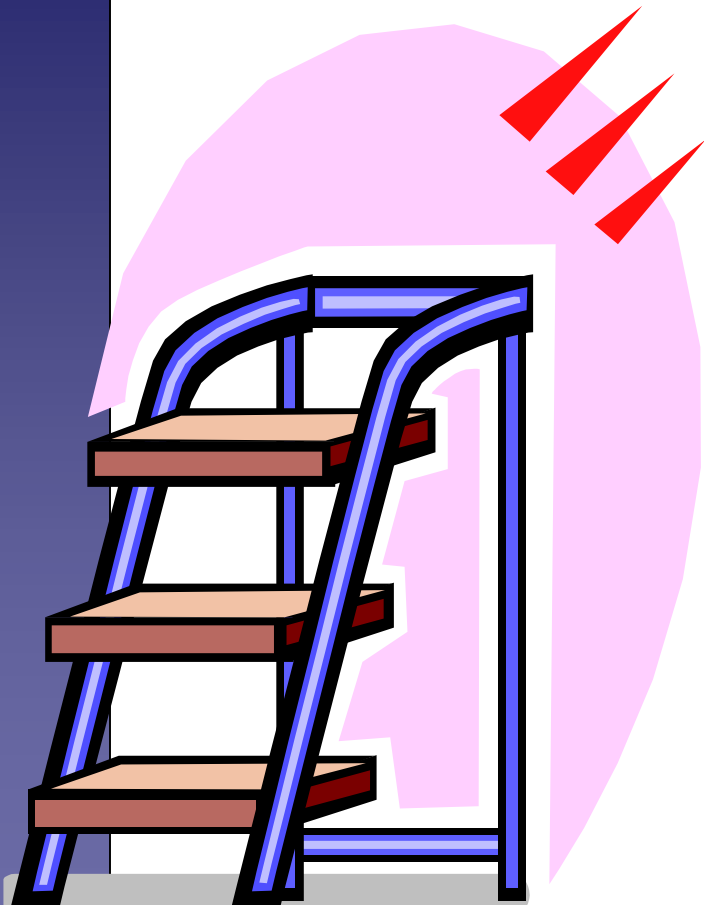
# Between now and July 2013

The Challenges  
Staffing , Morale , Services.





Hope and plan  
Gradual growth



**The New Hospital / AMC**  
**The UNIVERSITY MEDICAL CENTER**

A 2020 vision coming up earlier than that date

*Behavior change will result in culture change , will result in process change and will then may be result in outcome change and performance improvement .*



# UNIVERSITY MEDICAL CENTER (UMC)

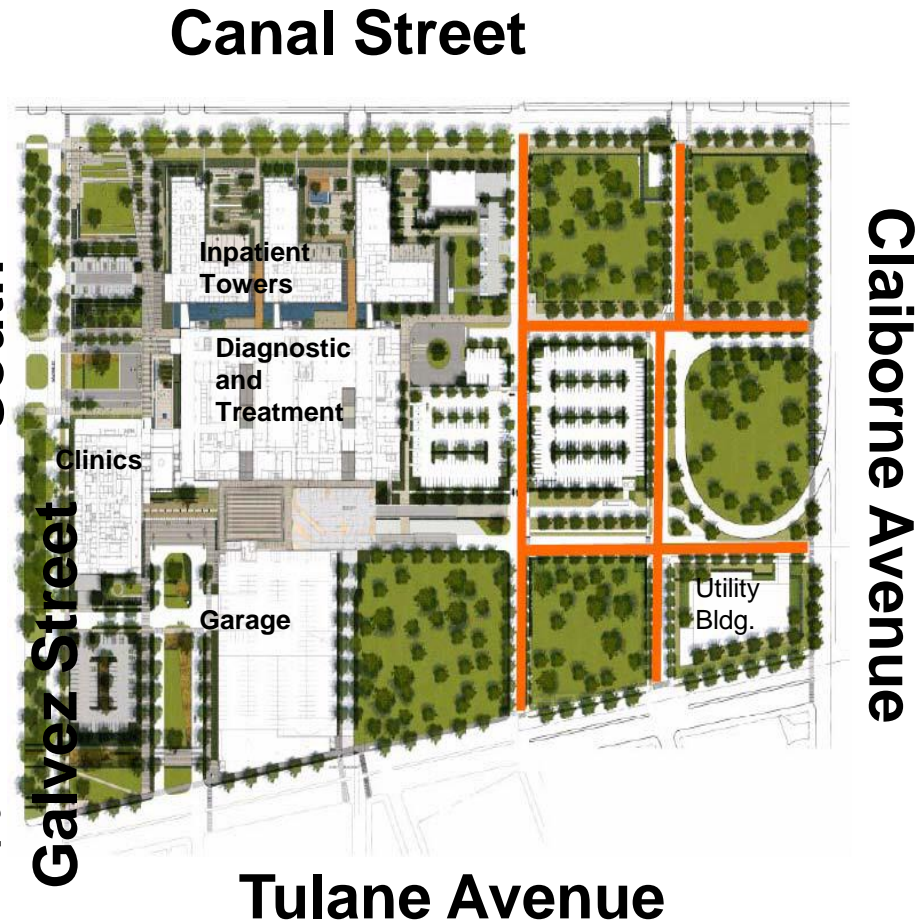


A Teaching Hospital



# University Medical Center

- Three Inpatient Towers (550,661 sq.ft)
- An Ambulatory Care Building (257,660 sq.ft.)
- A Diagnostic and Treatment Building (746,982 sq.ft.)
- Structured Parking (90,552 sq.ft.)



# University Medical Center (UMC)

424 Beds

Private

404 Beds

Semi Private ( Behavioral Health )

20 Beds

Level of Care	Number of Beds
Acute Care (Including 12 Prisoner Care Beds)	272
Intensive Care	72
Behavioral Health	60
Rehabilitation	20
Total	424

# University Medical Center

- **Ambulatory Services include but is not limited to.....**
  - State of Art Cancer and Infusion Center**
  - Dental Clinic**
  - Orthopedic Services**
  
- **Level 1 Trauma Center**
- **Multimedia Conference Center**
  - Video Integration
- **Wireless Access**
- **Clinical CCTV**
- **On Call Suites**
- **Over 3,000 Parking Spaces**
- **State of the Art Security Systems**

# Claiborne Avenue

Canal Street

Tulane Avenue



South Galvez Street



**Tulane Avenue Entrance**

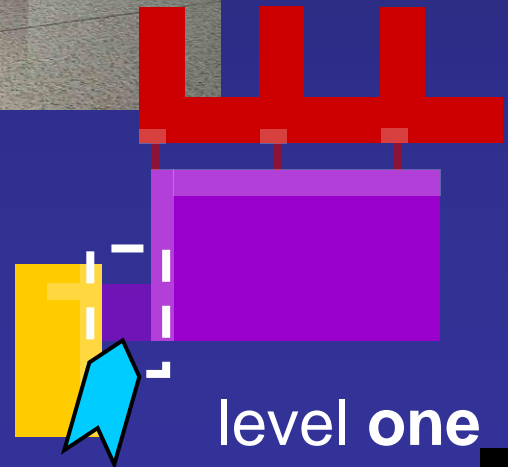




SU  
View From Canal Street

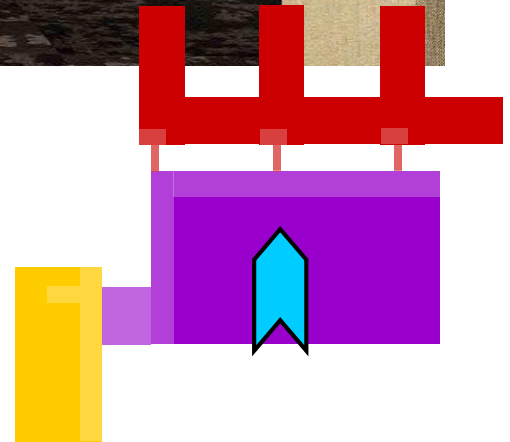


Entry Pavilion  
entry pavilion



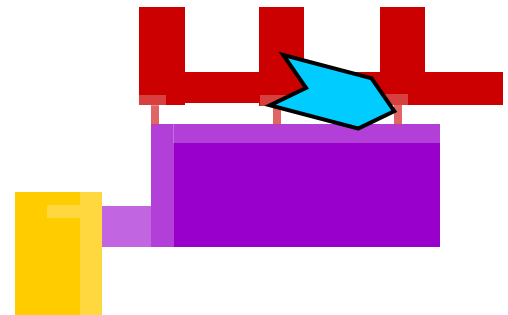


conference center



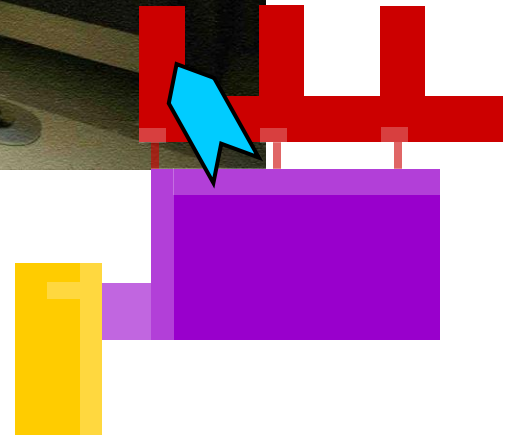


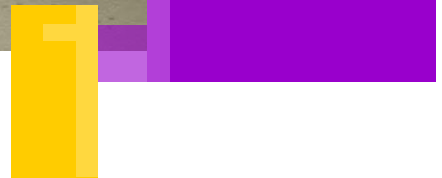
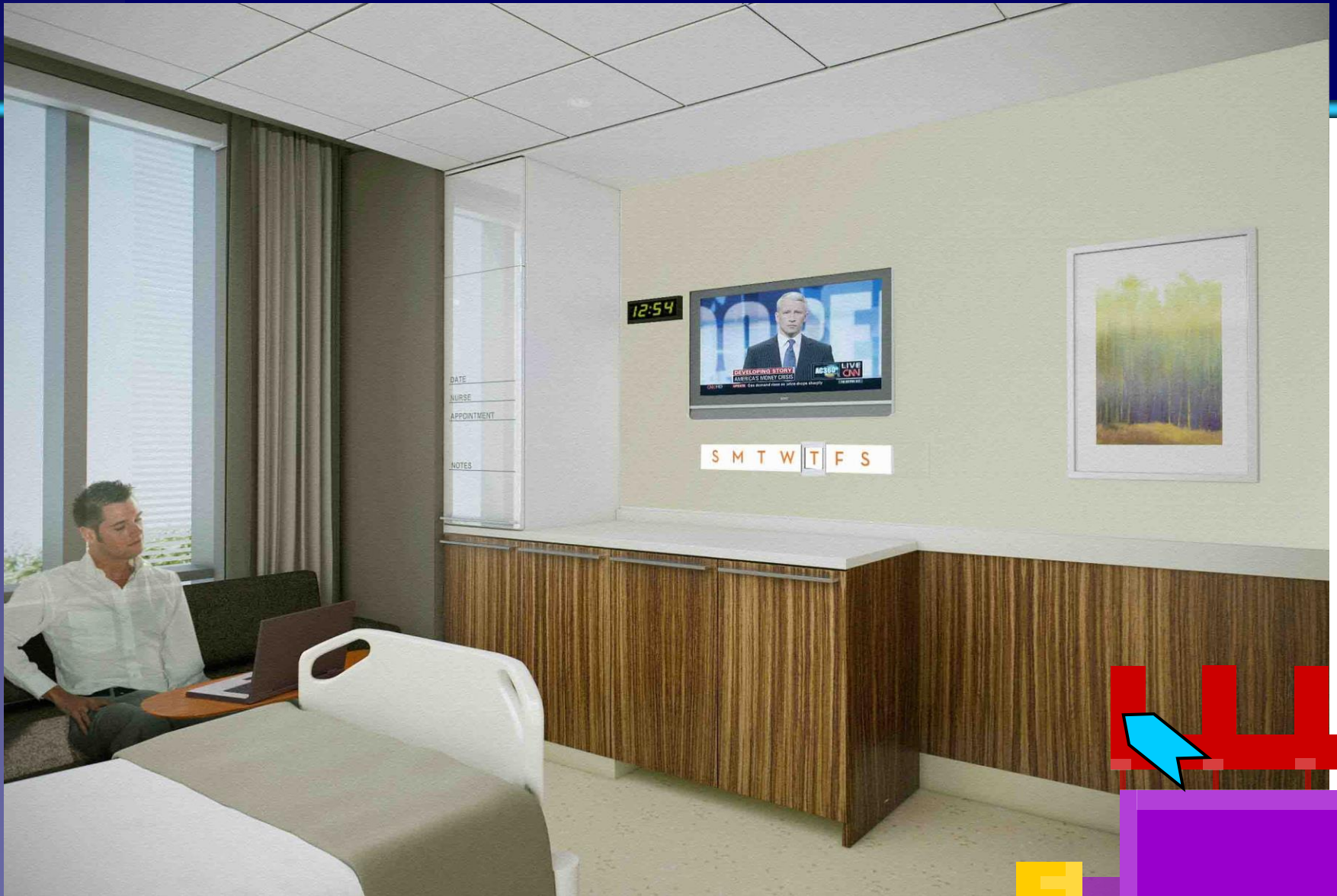
dining courtyard





patient room headwall





patient room footwall

# The Medical Corridor

- Hospitals
- Ambulatory Centers
- Research Centers 
- Medical schools
- Allied Health and Nursing Schools
- Supportive infrastructure





**The Spirit of Charity**  
**The Level One Trauma Center program**  
**The patient care services**  
**The teaching mission**  
**The Community Partnership with Care providers in the city**  
**The pride of ILH**

**CONTINUES and hopefully will continue**  
**With people on the ground going about**  
**doing what they do best and have been**  
**doing their best**

